



BOOKING&INFO: T +385 (0)52 800 250
M info@maistra.hr, W maistra.com
Book early for next summer



...that ACI marina Šimuni can perhaps be considered to be the [north entrance to Dalmatia](#), as it is the last marina in the Kvarner archipelago. Therefore, it is convenient to organize cruises to the north – Istria and Opatija – or to the south – Kornati or Šibenik, just as easily.

Don't forget to download Hello Zagreb **app**!
Did we miss anything? Do you need more information?
Visit us www.hellocroatia.eu
Get in touch zg@hellocroatia.eu

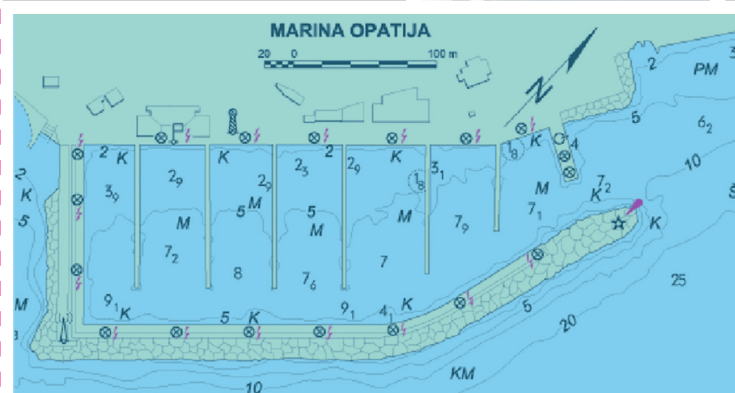
ACI marina Cres

Obala Svetog Benedikta 3
51 557 Cres
VHF Channel: 17
Tel: +385 (0) 51 571 622
GSM: +385 (0) 98 398 839
Fax: +385 (0) 51 571 125
E-mail: m.cres@aci-club.hr



ACI marina Opatija

VHF Channel: 17
Tel: +385 (0) 51 704 004
GSM: +385 (0) 98 398 840
Fax: +385 (0) 51 704 024
E-mail: m.opatija@aci-club.hr



... ACI marinas have become part of the Tesla Destination Charging global network – electric charging stations for electric cars.

ACI Marina Opatija

is situated in the town of Ičići. This is the best anchorage for yachts under 40 meters in the entire northern Adriatic, and its nautical tradition is three millennia old. In the 9th century BC it was home to Liburnians, skillful builders of fast ships made of wooden planks and rope that took them as far afield as North Africa and Asia Minor.

Berths (moorings) | 281 boat berths | 35 dry berths
mega yachts up to 40m in length can be accommodated
Amenities | reception with an exchange office and with a shopping point with rich selection of accessories from the ACI collection | cashpoint | restaurant, café bar | nautical equipment store and clothing store, fishing gear store | boat charter, insurance and sales agencies | newly refurbished toilet and shower facilities with separate disabled provision, laundrette
maintenance and repairs shop, 1st crane, slipway | car park | Wi-Fi internet access | fuel station in Opatija harbour (2 nm away)
Tesla Destination Charging | two Tesla Only electric charging stations with the power of up to 22kW | one universal charging station Etrac with the power of up to 2 x 22kW

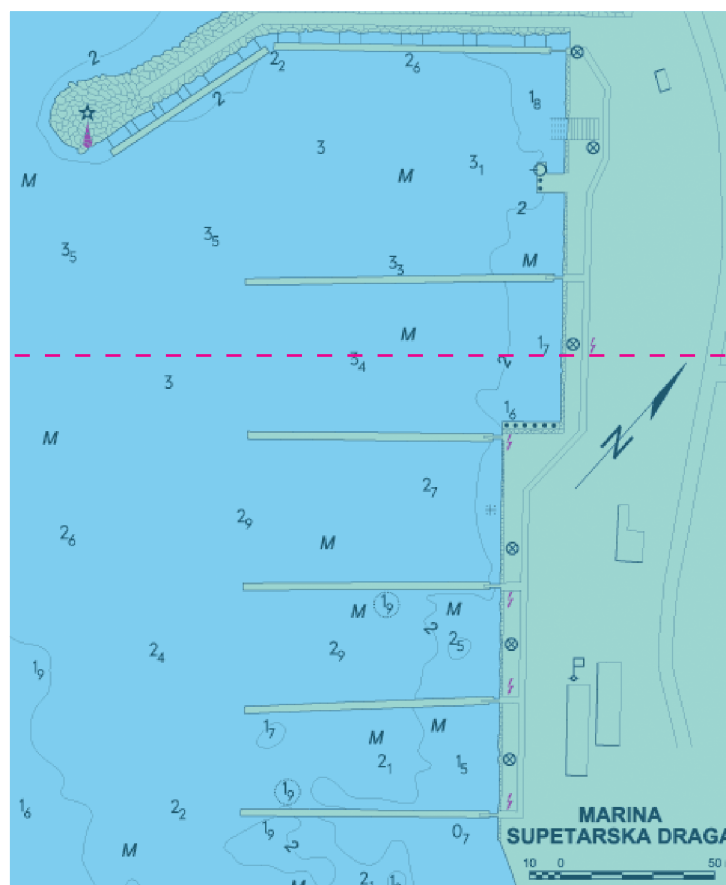
ACI Marina Cres

has been awarded the Blue Flag, a reliable indication of the perfect quality of its water and the environmental awareness of its management. It is situated in the very center of the largest and at the same time the most sparsely inhabited Adriatic island.

Berths (moorings) | 461 boat berths | 70 dry boat berths
mega yachts up to 50 m in length can be accommodated
Amenities | reception with an exchange office and with a shopping point with rich selection of accessories from the exclusive ACI collection, cashpoint | restaurant, café bar, grocery store, laundrette, bicycle and scooter hire | nautical equipment and beach accessories store with souvenir shop, bicycle, car and scooter hire | toilet and shower facilities with separate disabled provision | 1st crane, 80t travel lift, maintenance and repair shop, wastewater plant, 20m dismasting "needle" | accommodation consisting of 8 spacious apartments | car park | Wi-Fi internet access | fuel station (from 1st of May 2018 working hours 8 a.m. – 9 p.m., every day including Sundays) | solar smart bench
Tesla Destination Charging | two Tesla Only electric charging stations with the power of up to 22kW | one Tesla Universal charging station with the power of up to 22kW

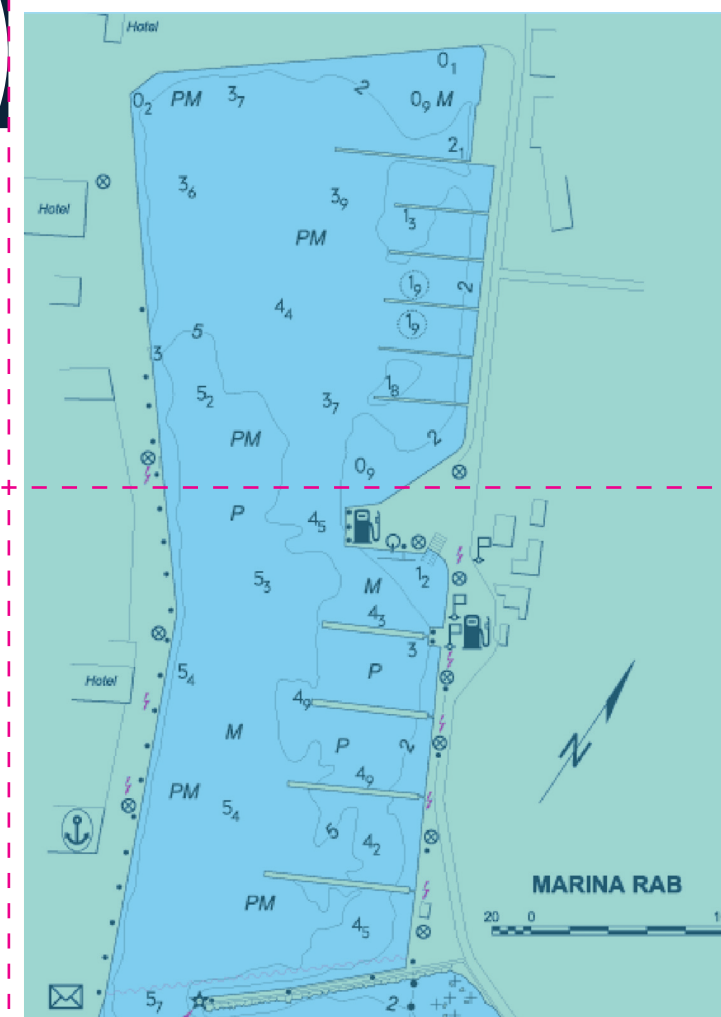
ACI marina Supetarska Draga

Draga, 51280, Rab
VHF Channel: 17
Tel: +385 (0) 51 776 268
GSM: +385 (0) 98 398 841
Fax: +385 (0) 51 776 222
E-mail: m.supdraga@aci-club.hr



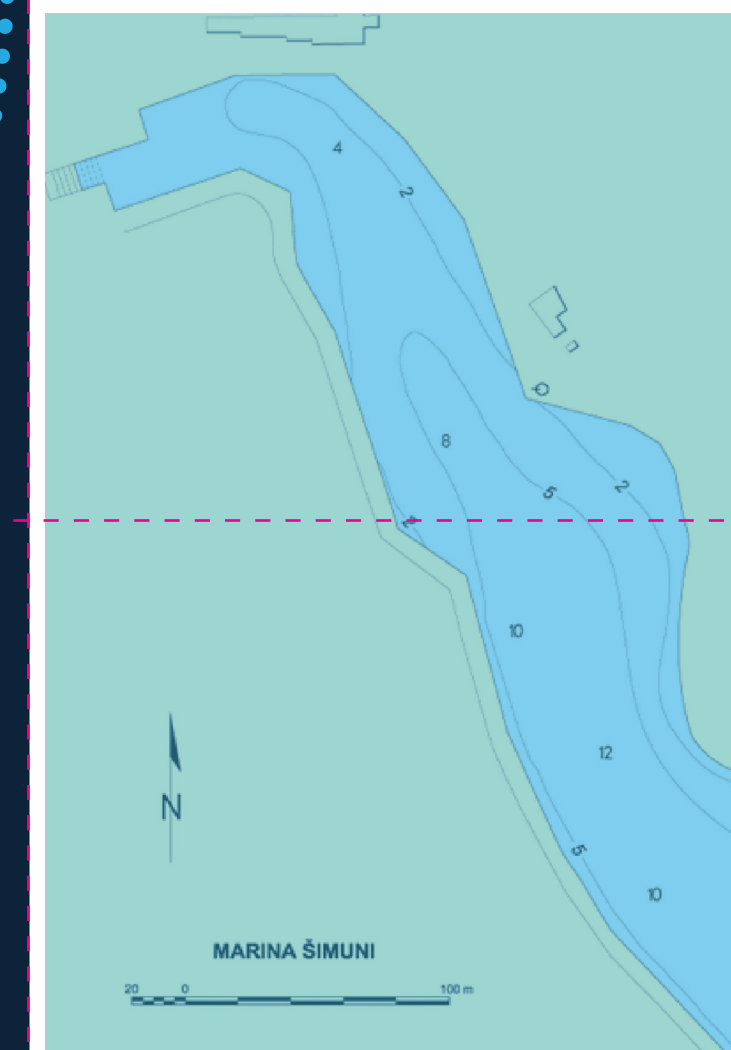
ACI marina Rab

Šetalište kap. I. Dominisa 101
51 280, Rab
VHF Channel: 17
Tel: +385 (0) 51 724 023
GSM: +385 (0) 98 399 482
Fax: +385 (0) 51 774 837
E-mail: m.rab@aci-club.hr



ACI marina Šimuni

Obala 1, 23 251 Kolan
VHF Channel: 17
Tel: +385 (0) 23 697 457
GSM: +385 (0) 98 398 843
Fax: +385 (0) 23 697 462
E-mail: m.simuni@aci-club.hr



ACI Marina Supetarska Draga

lets us get close to nature and experience a small fishing village. It is also famous for its clean sandy beaches that are sheltered from the wind, increasingly attracting boaters, in particular those with small children. ACI Marina Supetarska Draga is open throughout the year.

Berths (moorings) | 328 boat berths | 53 dry boat berths
Amenities | reception with an exchange office | restaurant, grocery store in the immediate vicinity of the marina | toilets and showers with separate disabled provision, laundrette | maintenance and repairs shop, 1st crane | car park | Wi-Fi internet access | fuel station next to ACI Marina Rab (11 nm)

ACI Marina Rab

is located in the town harbor and offers a plethora of amenities to boaters, from a restaurant to maintenance and repairs shop. The island's interior is just as impressive as its coast: as much as 35 percent of Rab is forest and fertile land, making it the second greenest Croatian island, behind Mljet.

Berths (moorings) | 142 berths
(seasonal, marina is open from 01.04. to 31.10.)
Amenities | reception with an exchange office (seasonal) | ATM restaurant, café bar, beauty salon | nautical and fishing gear store, boat equipment and spare parts store | toilets and showers with separate disabled provision | maintenance and repairs shop, 1st crane in the immediate vicinity of the marina | Wi-Fi internet access | fuel station in the immediate vicinity of the marina

ACI Marina Šimuni

is situated in the west of Pag Island, in the Maun Channel. It can perhaps be considered to be the north entrance to Dalmatia, as it is the last marina in the Kvarner archipelago. Pag's seemingly inhospitable landscape offers a different picture to what is usually seen elsewhere in the Adriatic islands – the colours are different here, the rocks' structure is more peculiar, and the sun shines almost all the year round.

Berths (moorings) | 191 berths | 55 dry berths
Amenities | reception with an exchange office and with a shopping point with rich selection of accessories from the ACI collection, cash point | first-class seafood restaurant | grocery store | toilet and shower facilities with separate disabled provision | 1st crane, maintenance and repair shop, slipway for boats up to 8 m in length | car park | Wi-Fi internet access | fuel station in Novalja harbour (7 nm)



Croatia DELUXE Cruise

voted THE BEST CROATIAN DMC 2016 26 years of excellence

katarina-line.com
incomingcroatia.com
cruises@katarina-line.hr
TEL +385 51 603 400
UK FREE 0800 472 5589
USA FREE 1800 485 3121

KATARINA line
www.katarina-line.com



ARBIANA HOTEL **AGATINI VRTOVI** **gala floor WINE BAR**

The Agatha's Gardens restaurant attracts visitors with its warm and elegant ambiance. In summer, the restaurant opens its beautiful terrace within the Mediterranean park, a perfect venue for a candlelit dinner by the walls of the ancient town of Rab.

The restaurant's menu is based on local ingredients, mainly fish or meat. Our top notch chef and his team create classic dishes with a modern touch, accentuating clear and distinct aromas.

Obala kralja Petra Krešimira IV br.12,
Rab, Hrvatska
www.arbianahotel.com

mail: sales@arbianahotel
Tel: +385(0)51 775 900
Tel./Fax: +385(0)51 725 563



Break Time
HANDCRAFTED IN CROATIA. FOR SEA LOVERS.

www.nautical-bracelets.com

ROVINJ | Arsenale 10
☎ +385 - 91 75 22 145
f breaktime.rovinj

POREČ | Trg Frana Supila 6
☎ +385 - 91 98 80 926
f breaktime.porec



I love to travel!

Fly Croatia Airlines
to magnificent Croatian Mediterranean pearl cities of Dubrovnik, Pula, Split, Zadar...

f i g+ YouTube in

+385 1 6676 555

croatiaairlines.com
m.croatiaairlines.com

CROATIA AIRLINES
A STAR ALLIANCE MEMBER